

GEM  
VISIONS  
2011

SWAROVSKI GEMS™

# CONTENTS

07

INTRODUCTION

- 09 TRENDS IN DESIGN
- 16 DIRECTIONS
- 22 SPECIAL FEATURE:  
THE JEWELLERY BUYING EXPERIENCE
- 30 SPECIAL FEATURE:  
JEWELS OF THE KALAHARI
- 34 OFFICES & CONTACTS



39

PURE LIGHT

46 SPECIAL FEATURE:  
PURELY BRILLIANT

83

REFERENCE



123

MEMORIES



155

EXPERIENCE



191

DREAMSTORMING

After the extravagant excess of recent years, giving consumers room to breathe and designers the calm *SPACE* in which to create radical transformations, Gem Visions 2011 makes a special study of two large emerging markets, *INDIA AND CHINA*, both influences on Western design, but also generating their own national trends. Overall, a sense of soul takes over from the dictatorship of status.



ROOM TO BREATHE



BESSA Jewellery  
www.bessa.com



BESSA Gemstone



BESSA Philippe Thomire  
www.philippe-thomire.com



INDIA & CHINA



## PURE LIGHT

This all-white trend, focusing on the purity, radiance and inner fire of all colourless stones: diamonds, zirconia, white sapphire and topaz, provides a calm refuge from the onslaught of colour. It celebrates and re-interprets the timeless classicism of the white, light-filled gemstones, its shapes and cuts, its infinite reflections, infusing design with peace, harmony and serenity. This theme has the flavour of Santorini, the Greek island, white, calm and shimmering in the brilliant sunlight.





COMPTON Light  
COMPTON Germany  
CONTACT: 02243942220@compton.de  
www.compton-light.com  
WIRTSCHAFTSUNIVERSITÄT  
Duisburg-Essen



COMPTON Light GmbH, Germany, www.compton-light.com, 02243942220@compton.de, www.compton-light.com



# REFERENCE

This theme introduces strong, barrier-breaking aesthetic codes that work towards a modern iconic classic jewel, expressing its moment in time, the personality and values of its wearer. Powerfully modernist, urban statement jewels are underlined with meaning and references to the world around them, like a Herzog de Meuron building, the stadium in Munich or a jewel by Anish Kapoor, distilled from his monumental mirror sculptures. The look is aristocratic, architectural and abstract, with tactility and sensuality, reflecting a new, powerful femininity.

# TEXTURES AND MATERIALS

A strong metallic presence, incorporating chains, sculptural blocks in black and gold with industrial finishes, sandblasted, or smooth and matte, Marcasite. The satin sheen of pearls, particularly black pearls in gunmetal grey, and the organic softness of precious woods, add opacity to shadowy gems.







# DES IGNS



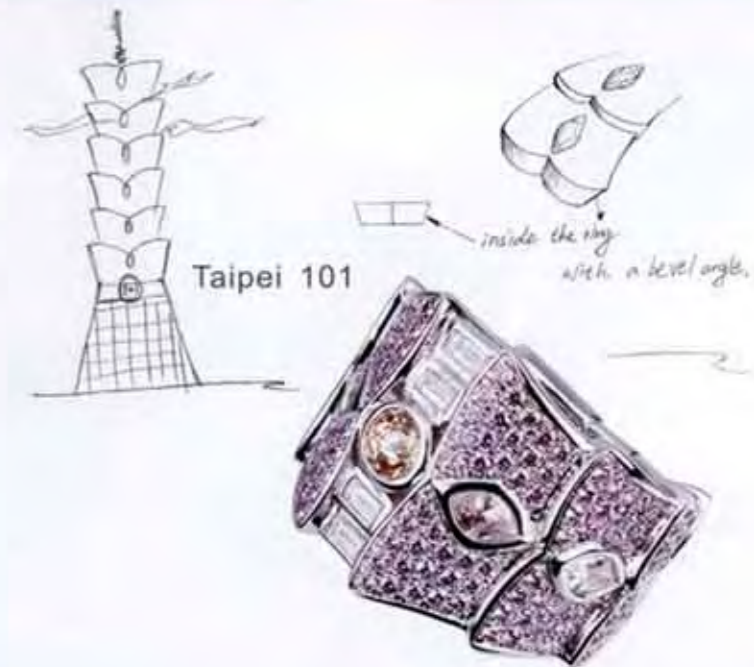
DESIGNER: Design Unifort  
COMPANY: L. Assolati Factory  
COUNTRY: SLOVAKIA  
ADDRESS: vlna 2, 020 11 21  
MATERIAL: SWAROVSKI Zirconia  
Pure Brilliance Cut - 18K Gold

DESIGNER: Inanna Mariani  
COMPANY: Cony Stasi  
COUNTRY: ITALY  
CONTACT: conystasi.com.br  
MATERIAL: SWAROVSKI Zirconia  
Pure Brilliance Cut White, Brown,  
925 Silver





DESIGNER: Gunjan Sori  
 COMPANY: Sorenji & Company Limited  
 COUNTRY: India  
 CONTACT: +91 22 66561111  
 MATERIAL: SWAROVSKI Marcasite,  
 SWAROVSKI Zirconia Brown, 18k Gold



DESIGN: Sunset Reflections on Taipei 101  
 DESIGNER: Jen Shiang Hao  
 COMPANY: Gilbert Jewelry Company Limited  
 COUNTRY: Taiwan  
 CONTACT: +886 7 269 1000, www.isaacking.com.tw  
 MATERIAL: SWAROVSKI Zirconia White,  
 Amethyst, New Reversed Cut Champagne,  
 New Lemon Cut White; 925 Silver